



# ALTIX

## ACURA

PREMIUM

# ENHANCED CONTACT PRINTING by ALTIX

PCB



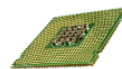
Sheet to Sheet



FPCB / Flex



IC Substrate



Chemical Milling





Inner-Layer



Outer-Layer



Soldermask (PSR)

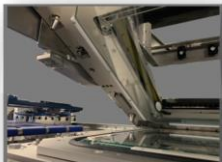
# ACURA PREMIUM SERIES: MULTI-PROCESS DOUBLE SIDED SIMULTANEOUS EXPOSURE

## Adaptability

Adaptability is at the center of the design. The machine boasts an amazing compact footprint considering the machine is double-sided.

Furthermore, Industry 4.0 integration with existing systems makes installation a breeze.

Moreover, glassmask and mylar artwork compatibility ensures maximum versatility. Finally, the wide-angle rocking frame makes the operator's life easier by facilitating cleaning.



## Reliable Productivity

On account of Altix's double-sided simultaneous exposure technology, the machine delivers up to 4 or 5 panels/minute while saving energy thanks to its LedLight™ durable UV sources.

In addition, the equipment's robust architecture coupled with our myAltix Customer Service Portal ensures maximum reliability.



## Precision Control

The machine's precision capabilities described below are accompanied by a dual-screen HMI for maximum operator control. Meanwhile, the enhanced vacuum management contributes to our high accuracy registration system.

High Accuracy Registration System:

I/L:  $\pm 5\mu\text{m}$  |  $\pm 0.2\text{mil}$

Front to Back

O/L & S/M:  $\pm 8\mu\text{m}$  |  $\pm 0.3\text{mil}$

Image to Panel

High Resolution:

Line & Space

I/L & O/L :  $25\mu\text{m}$  | 1mil

S/M:  $50\mu\text{m}$  | 2mil



# Acura Premium Series



**Dual Screen**



**Rocking Upper Frame**



**Small Footprint**



**Ergonomic**

*Possibility to switch both screens*



**Wide opening angle**

*Easy and effortless way to check the exposure room*



**Compact machine**

*Architecture optimized for a reduced footprint*



**Effective monitoring**

*Displays all data and cameras' field of view*



**Efficient cleaning**

*Allows effective glass and artwork clean-up*



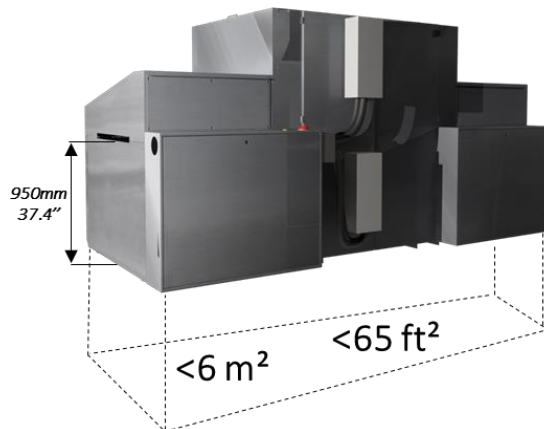
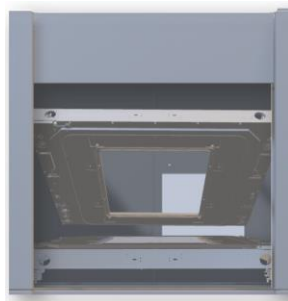
**Conveyor height**

*Standard PCB height pass*



**Multi-task**

*Makes it easier to use multiple functions*



# Innovation Highlights



Full Vacuum Monitoring



Ergonomic & Clean Appearance



UV Light Source



Artworks vacuum  
*Independent digital level*



Robust structure  
*Full stainless steel body*



LedLight™ Compatible



Vacuum between glasses  
*Live mode available for on-demand monitoring*



Safer transportation  
*Rails integrated to ease handling*



ColliLight™ Compatible



Advantages of Altix Simultaneous Double-Sided Exposure



Artworks compatibility check



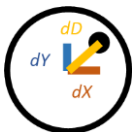
Both artwork under the same environmental conditions



Alignment checked before exposure



Minimal set-up time: <2min.



Better accuracy & repeatability  
top/bottom  $\pm 5\mu\text{m}$



Minimum risk: no flipping station

# Acura Premium Series Specifications

Application	Inner Layer (I/L)	Outer Layer (O/L)	I/L & O/L	Soldermask (PSR)
Exposure Area	Up to 610 x 762mm		Up to 24 x 30"	
Panel Thickness	0.05 - 6mm		0.002 - 0.236"	
Resolution	Min. Dam 25µm Min. Dam 1mil			Min. Dam 50µm Min. Dam 2mil
Light Engine	LedLight™   ColliLight™ (5kW or 8kW)			Mach 5®
Light Intensity	≥ 50mW/cm²   ≥ 25mW/cm² * or ≥ 40mW/cm² *			≥ 150mW/cm²
Exposure Spectrum	365nm   350-430nm			Up to 5 LED Wavelengths 365 to 435nm
Exposure Contact	Soft or Hard Contact Vacuum		CMI™ Available	
Throughput**	Up to 5 panels/min			Up to 4 panels/min
Alignment (After Vacuum)	±5µm ±0.20mil AW/AW ±8µm ±0.32mil AW/Web ±3µm ±0.12mil Repeatability			±8µm ±0.32mil Image to Panel
Software	ALTIX Imaging Suite with Dual 17" Touch Screen			
Temperature Control	Exposure Area Cooling System – Room Temperature [0 ; +3°C]			
Air Supply	6-7 bars		1.5m³/min	
Power Consumption	6kW   17kW or 25kW			12kW – Chiller Included
Water Supply	20-30L/min   20-30L/min or 50-80L/min @ 3 bars			5L/min
Machine Weight	2,200kg	4850lbs	4,750kg	10,472lbs
				2,500kg 5,512lbs

LedLight™MACH5 2020



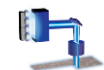
ALDS-Power4+™ 2018



LedLight™MACH3 2017



ALDS-Power4™ 2016



ALDS 2015



LedLight™ 2012



OptiLight™ 2009



Diffuse™ 1997



ColliLight™ 1992



### Product Launches



2021 Acura Premium Series

2019 AdixSA neo  
Adix RtR

2018 AdixCS/F  
AdixPT/F

2017 Afosa LedLightMach3  
Acura LedLightMach3

2016 Acura Premium

2015 Adix SA

2014 AcuReel

2013 Afosa LED

2012 AcuraDSS

2011 Acura LedLight

2007 Acura

2005 Arrow

2002 Afosaie

1996/98 Evol2b  
Evol2b RtR

1993 Evolution1



**Manufacturing, Sales & Service: Europe**  
Altix France – HQ  
Email: [central@altix.fr](mailto:central@altix.fr)



**Direct Sales & Service: Asia**  
Altix China  
Shanghai, Kunshan,  
Zhuhai Offices  
Email: [central@altix.cn](mailto:central@altix.cn)



**North America**  
Altix NA, Inc.  
West Coast, Mid West and  
East Coast  
Email: [central@altix.us](mailto:central@altix.us)

[www.altix.fr](http://www.altix.fr)

